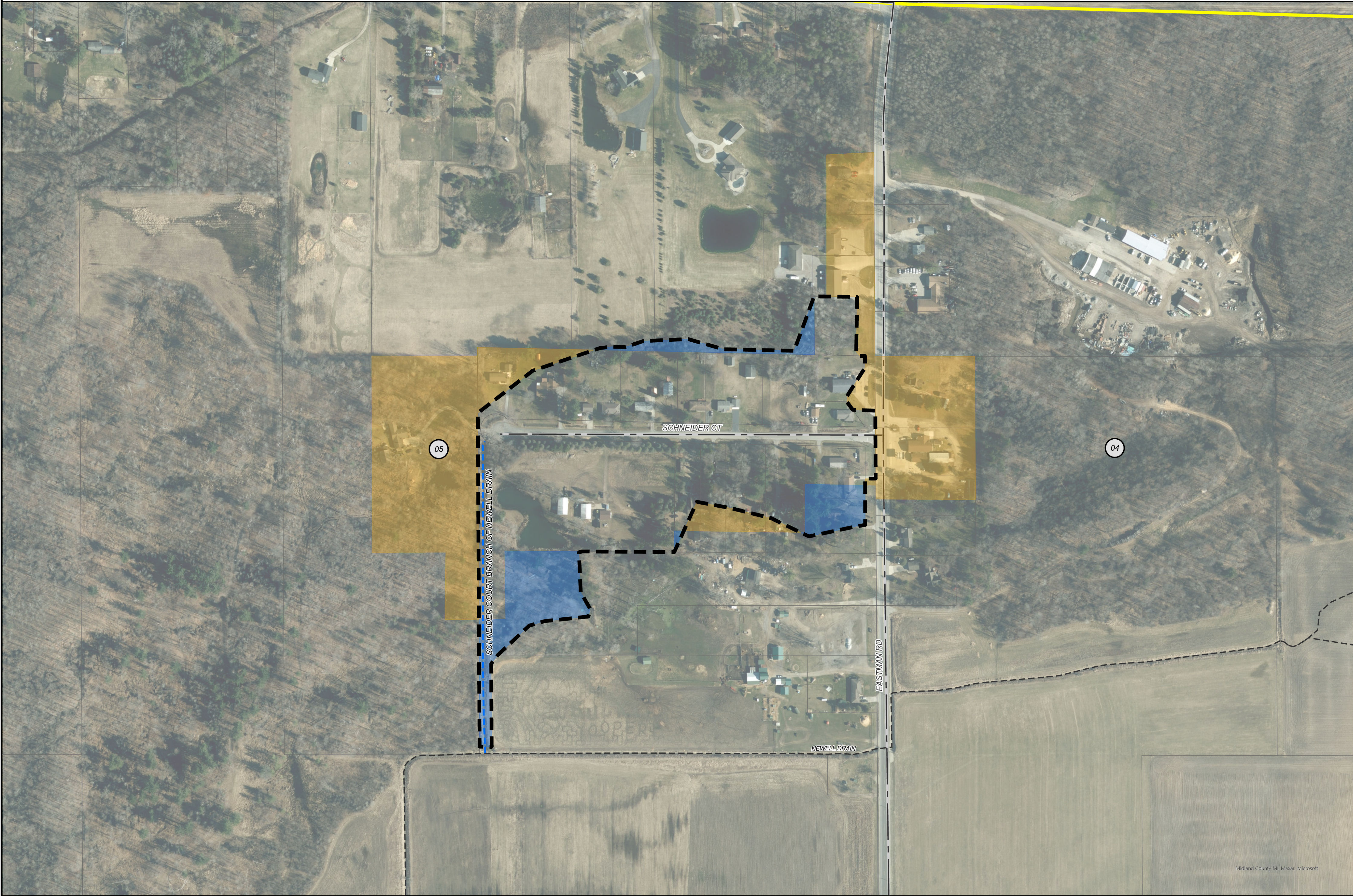


SCHNEIDER COURT BRANCH OF NEWELL DRAIN
MIDLAND COUNTY, MICHIGAN
MIDLAND COUNTY DRAIN COMMISSIONER - JOSEPH SOVA



E BOMBAY RD
MILLS TOWNSHIP
LARKIN TOWNSHIP
MIDLAND COUNTY
N EASTMAN RD

AREA MAP
NOT TO SCALE

N

0 75 150 300 FEET

LEGEND

- DRAINAGE DISTRICT BOUNDARY
- APPROXIMATE DRAIN LOCATION
- APPROXIMATE LOCATION OF OUTLET WATERCOURSE
- LANDS ADDED
- LANDS REMOVED
- MUNICIPALITY BOUNDARIES
- PARCELS
- STATE ROADS
- COUNTY ROADS
- LOCAL ROADS
- RAILROAD
- SECTION

DRAINAGE DISTRICT BREAKDOWN

MIDLAND COUNTY	
LARKIN TOWNSHIP	20.78 AC.

TOTAL ACREAGE IN DISTRICT 20.78 AC.

LENGTH OF DRAIN
SCHNEIDER COURT BRANCH OF NEWELL DRAIN 1,034.56 FT.

BY	MARK	REVISIONS	DATE
THE WORK REPRESENTED BY THIS DRAWING WAS DESIGNED BY THE ENGINEER FOR THIS SPECIFIC APPLICATION AND SPECIFIC LOCATION DESCRIBED HEREON IN ACCORDANCE WITH THE CONDITIONS PREVALENT AT THE TIME THE DESIGN WAS DONE. THE ENGINEER DOES NOT GUARANTEE AND WILL NOT BE LIABLE FOR ANY OTHER LOCATION, CONDITION, DESIGN OR PURPOSE.			
SCHNEIDER COURT BRANCH OF NEWELL DRAIN MIDLAND COUNTY, MICHIGAN			
DRAINAGE DISTRICT MAP			
		SAGINAW'S OFFICE 230 S Washington Ave Saginaw, MI 48607 Tel: 989-754-4747 www.SpicerGroup.com	
DE. BY: LLG	CH. BY: LDO	PROJECT NO. 137529SG2024	
DR. BY: LLG	APP. BY: LDO		
STDS.	SHEET 1 OF 1	DR 1	
DATE: JANUARY 2025	FILE NO.		
SCALE: 1"=150'			